

2021



GENERAL CATALOGUE
WEIGHING SOLUTIONS

PRICE COMPUTING SCALE

SERIES S200

- + Modern design
- + Legal for trade
- + Available in white and black colors
- + Suitable for shops and itinerant sales
- + Ultra-Low Power consumption
- + Li-on rechargeable battery
- + Battery lasts up to 1 month with single charge*
- + Light touch membrane keyboard with 12hot keys
- + Single 3 line LCD with backlight
- + Easy and intuitive functionality
- + High quality stainless steel pan
- + RS232 communication



| Order № | Model | Max capacity | (e) | Display version | Pan size | Color |
|-------------|-------------|--------------|--------|-----------------|---------------|-------|
| 01-3001-101 | S200B 3/6 | 3/6 kg | 1/2 g | Flat | 290mm x 221mm | ■ □ |
| 01-5001-101 | S200B 6/15 | 6/15 kg | 2/5 g | Flat | 290mm x 221mm | ■ □ |
| 01-7001-101 | S200B 15/30 | 15/30 kg | 5/10 g | Flat | 290mm x 221mm | ■ □ |
| 01-3011-101 | S200L 3/6 | 3/6 kg | 1/2 g | Pole | 290mm x 221mm | ■ □ |
| 01-5011-101 | S200L 6/15 | 6/15 kg | 2/5 g | Pole | 290mm x 221mm | ■ □ |
| 01-7011-101 | S200L 15/30 | 15/30 kg | 5/10 g | Pole | 290mm x 221mm | ■ □ |

Display: 3 line LCD display with backlight

Keyboard: Light touch waterproof membrane keyboard, 20 functional keys and 12hot keys for PLU

Memory: 70 PLU

Functions: Price computing, Semiautomatic Tare, Manual Tare, Zeroing, Sales by 100g, Quick PLU storing, Change function, Price and Tare FIX function

Power saving functions: Auto OFF function timer, Sleep mode timer (wake up by pressing any key), Backlight brightness adjustment, backlight time adjustment

Interface: RS232

Communication protocols: multi communication protocols available

Power supply: Adaptor AC 5V/500mA, Rechargeable Li-on battery 3.7V

Battery life: up to 30 days with sleep mode

Working temperature: -10C to 40C

Humidity: 15% to 85% R

Dimensions: 350mm(L) x 336mm(W) x 125mm(H)

PRICE COMPUTING SCALE

SERIES S300 M

- + Improved version of S200
- + Supports external printer
- + Available in white and black colors
- + Suitable for shops and itinerant sales
- + Ultra-Low Power consumption
- + Li-on rechargeable battery
- + Battery lasts up to 1 month with single charge*
- + Light touch membrane keyboard with 12hot keys
- + Single 3 line LCD with backlight
- + Easy and intuitive functionality
- + High quality stainless steel pan
- + RS232 communication



| Order № | Model | Max capacity | (e) | Display version | Pan size | Color |
|-------------|--------------|--------------|---------|-----------------|---------------|-------|
| 02-1301-101 | S300FM 1.5/3 | 1.5/3 kg | 0.5/1 g | Flat | 290mm x 221mm | ■ □ |
| 02-3301-101 | S300FM 3/6 | 3/6 kg | 1/2 g | Flat | 290mm x 221mm | ■ □ |
| 02-5301-101 | S300FM 6/15 | 6/15 kg | 2/5 g | Flat | 290mm x 221mm | ■ □ |
| 02-7301-101 | S300FM 15/30 | 15/30 kg | 5/10 g | Flat | 290mm x 221mm | ■ □ |
| 02-1411-101 | S300LM 1.5/3 | 1.5/3 kg | 0.5/1g | Pole | 290mm x 221mm | ■ □ |
| 02-3411-101 | S300LM 3/6 | 3/6 kg | 1/2 g | Pole | 290mm x 221mm | ■ □ |
| 02-5411-101 | S300LM 6/15 | 6/15 kg | 2/5 g | Pole | 290mm x 221mm | ■ □ |
| 02-7411-101 | S300LM 15/30 | 15/30 kg | 5/10 g | Pole | 290mm x 221mm | ■ □ |

Display: 3 line LCD display with backlight

Keyboard: Light touch waterproof membrane keyboard, 20 functional keys and 12hot keys for PLU

Memory: 1800 PLU

Functions: Price computing, Semiautomatic Tare, Manual Tare, Zeroing, Sales by 100g, Quick PLU storing, Change function, Price and Tare FIX function

Power saving functions: Auto OFF function timer, Sleep mode timer (wake up by pressing any key), Backlight brightness adjustment, backlight time adjustment

Interface: RS232

Communication protocols: supports label printer, multi communication protocols available

Power supply: Adaptor AC 5V/500mA, Rechargeable Li-on battery 3.7V

Battery life: up to 30 days with sleep mode

Working temperature: -10C to 40C

Humidity: 15% to 85% R

Dimensions: 350mm(L) x 336mm(W) x 125mm(H)

PRICE COMPUTING SCALE

SERIES S300F

- + Compact size
- + Supports external printer
- + Suitable for shops and itinerant sales
- + Ultra-Low Power consumption
- + Li-ion rechargeable battery
- + Battery lasts up to 1 month with single charge*
- + Capacitive keyboard
- + Single 3 line LCD with backlight
- + Easy and intuitive functionality
- + High quality stainless steel pan
- + RS232 communication



| Order № | Model | Max capacity | (e) | Display version | Pan size | Color |
|-------------|-------------|--------------|---------|-----------------|---------------|--------------------------|
| 202-1001-01 | S300F 1.5/3 | 1.5/3 kg | 0.5/1 g | Flat | 235mm x 205mm | <input type="checkbox"/> |
| 02-3201-111 | S300F 3/6 | 3/6 kg | 1/2 g | Flat | 235mm x 205mm | <input type="checkbox"/> |
| 02-5201-111 | S300F 6/15 | 6/15 kg | 2/5 g | Flat | 235mm x 205mm | <input type="checkbox"/> |
| 02-7201-111 | S300F 15/30 | 15/30 kg | 5/10 g | Flat | 235mm x 205mm | <input type="checkbox"/> |
| 02-1211-111 | S300L 1.5/3 | 1.5/3 kg | 0.5/1g | Pole | 235mm x 205mm | <input type="checkbox"/> |
| 02-3211-111 | S300L 3/6 | 3/6 kg | 1/2 g | Pole | 235mm x 205mm | <input type="checkbox"/> |
| 02-5211-111 | S300L 6/15 | 6/15 kg | 2/5 g | Pole | 235mm x 205mm | <input type="checkbox"/> |
| 02-7211-111 | S300L 15/30 | 15/30 kg | 5/10 g | Pole | 235mm x 205mm | <input type="checkbox"/> |

Display: 3 line LCD display with backlight

Keyboard: Capacitive waterproof keyboard, 20 functional keys

Memory: 1800 PLU

Functions: Price computing, Semiautomatic Tare, Manual Tare, Zeroing, Sales by 100g, Quick PLU storing, Change function, Price and Tare FIX function

Power saving functions: Auto OFF function timer, Sleep mode timer (wake up by pressing any key), Backlight brightness adjustment, backlight time adjustment

Interface: RS232

Communication protocols: supports label printer, multi communication protocols available

Power supply: Adaptor AC 5V/500mA, Rechargeable Li-ion battery 3.7V

Battery life: up to 30 days with sleep mode

Working temperature: -10C to 40C

Humidity: 15% to 85% R

Dimensions: 264mm(L) x 305mm(W) x 118mm(H)

BENCH SCALE

SERIES S300P

- + Multipurpose compact scale
- + Legal for trade
- + Fast weighing
- + Simple to use
- + Water splash proof
- + Large Display with multicolor display
- + Checkweighing function
- + Counting function
- + Supports external printer
- + Ultra-Low Power consumption
- + Li-on rechargeable battery
- + Battery lasts up to 1 month with single charge*
- + Capacitive keyboard
- + High quality stainless steel pan
- + RS232 communication



| Order № | Model | Max capacity | (e) | Approved version | Customer display | Pan Size | Color |
|-------------|-------------|--------------|---------|------------------|------------------|---------------|-------|
| 02-1000-101 | S300P 1.5/3 | 1.5/3 kg | 0.5/1 g | Yes | Option | 235mm x 205mm | ■ |
| 02-3000-101 | S300P 3/6 | 3/6 kg | 1/2 g | Yes | Option | 235mm x 205mm | ■ |
| 02-5000-101 | S300P 6/15 | 6/15 kg | 2/5 g | Yes | Option | 235mm x 205mm | ■ |
| 02-7000-101 | S300P 15/30 | 15/30 kg | 5/10 g | Yes | Option | 235mm x 205mm | ■ |
| 02-0000-100 | S300P T 1.5 | 1.5 kg | 0.1g | No | Option | 235mm x 205mm | ■ |
| 02-2000-100 | S300P T 3 | 3 kg | 0.2 g | No | Option | 235mm x 205mm | ■ |
| 02-4000-100 | S300P T 6 | 6 kg | 0.5 g | No | Option | 235mm x 205mm | ■ |
| 02-6000-100 | S300P T 15 | 15 kg | 1 g | No | Option | 235mm x 205mm | ■ |
| 02-8000-100 | S300P T 30 | 30 kg | 1 g | No | Option | 235mm x 205mm | ■ |

Display: Large LCD display with multicolor backlight

Customer display: Option

Keyboard: Waterproof capacitive keyboard, 6 functional keys

Functions: Tare, Auto Tare, Zero, Simple weighing, Piece Counting, Checkweighing with backlight color change and acoustic signal, Receipt printing, Totalization

Power saving functions: Auto OFF function timer

Interface: RS232

Communication protocols: Supports label printer, multi communication protocols available

Power supply: Adaptor AC 5V/500mA

Battery: Rechargeable Li-on battery 3.7V (Option)

Working temperature: -10C to 40C

Humidity: 15% to 85% R

Dimensions: 264mm(L) x 305mm(W) x 118mm(H)

BENCH SCALE

SERIES S300PM

- + Multipurpose compact scale
- + Legal for trade
- + Fast weighing
- + Simple to use
- + Large Display with multicolor display
- + Checkweighing function
- + Counting function
- + Supports external printer
- + Ultra-Low Power consumption
- + Li-on rechargeable battery
- + Battery lasts up to 1 month with single charge*
- + Capacitive keyboard
- + High quality stainless steel pan
- + RS232 communication



| Order № | Model | Max capacity | (e) | Approved version | Customer display | Pan Size | Color |
|-------------|--------------|--------------|---------|------------------|------------------|---------------|-------|
| 02-1100-101 | S300PM 1.5/3 | 1.5/3 kg | 0.5/1 g | Yes | Option | 290mm x 221mm | ■ |
| 02-3100-101 | S300PM 3/6 | 3/6 kg | 1/2 g | Yes | Option | 290mm x 221mm | ■ |
| 02-5100-101 | S300PM 6/15 | 6/15 kg | 2/5 g | Yes | Option | 290mm x 221mm | ■ |
| 02-7100-101 | S300PM 15/30 | 15/30 kg | 5/10 g | Yes | Option | 290mm x 221mm | ■ |
| 02-0100-100 | S300PM T 1.5 | 1.5 kg | 0.1g | No | Option | 290mm x 221mm | ■ |
| 02-2100-100 | S300PM T 3 | 3 kg | 0.2 g | No | Option | 290mm x 221mm | ■ |
| 02-4100-100 | S300PM T 6 | 6 kg | 0.5 g | No | Option | 290mm x 221mm | ■ |
| 02-6100-100 | S300PM T 15 | 15 kg | 1 g | No | Option | 290mm x 221mm | ■ |
| 02-8100-100 | S300PM T 30 | 30 kg | 1 g | No | Option | 290mm x 221mm | ■ |

Display: LCD display with backlight

Customer display: Option

Keyboard: Waterproof capacitive keyboard, 6 functional keys

Functions: Tare, Auto Tare, Zero, Simple weighing, Piece Counting, Checkweighing, Receipt printing, Totalization

Power saving functions: Auto OFF function timer

Interface: RS232

Communication protocols: Supports label printer, multi communication protocols available

Power supply: Adaptor AC 5V/500mA

Battery: Rechargeable Li-on battery 3.7V (Option)

Working temperature: -10C to 40C

Humidity: 15% to 85% R

Dimensions: 336mm(L) x 351mm(W) x 125mm(H)

PLATFORM SCALE

SERIES E

- + Detachable indicator pole from stainless steel AISI 304
- + Top cover from stainless steel AISI 304
- + Powder coated paint structure
- + Single point aluminum load cell with OIML
- + Indicator Si10
- + Interface RS232
- + Factory Metrological Verification



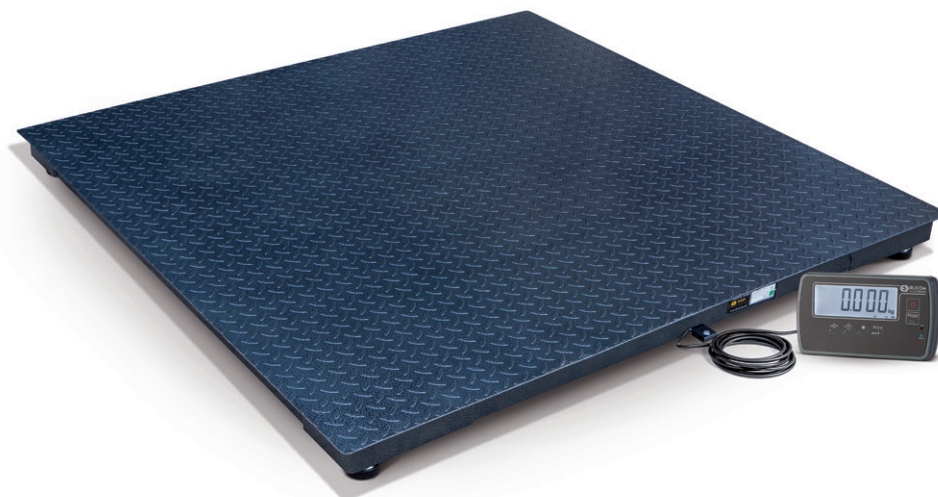
| Order № | Model | Max load kg | Division e.g | M | Platform size (mm) |
|-------------|---------------------|-------------|--------------|---|--------------------|
| 201-1001-01 | Si10 E 3/6 30*30 | 3/6 | 1/2 | M | 300x300 |
| 201-1001-02 | Si10 E 6/15 30*30 | 6/15 | 2/5 | M | 300x300 |
| 201-1001 | Si10 E 15/30 30*30 | 15/30 | 5/10 | M | 300x300 |
| 201-1002 | Si10 E 30/60 30*40 | 30/60 | 10/20 | M | 300x400 |
| 201-1003-01 | Si10 E 30/60 40*50 | 30/60 | 10/20 | M | 400x500 |
| 201-1003-02 | Si10 E 60/120 40*50 | 60/120 | 20/50 | M | 400x500 |
| 201-1003-03 | Si10 E 150 40*50 | 150 | 50 | M | 400x500 |
| 201-1004-01 | Si10 E 150 45*60 | 150 | 50 | M | 450x600 |
| 201-1004-02 | Si10 E 300 45*60 | 300 | 100 | M | 450x600 |
| 201-1006-01 | Si10 E 300 70*80 | 300 | 100 | M | 700x800 |

| Order № | Indicator options |
|---------|--------------------------|
| 19-015 | Li-on Battery 7.4v |
| 71-017 | RS232 Cable 2m (803) |
| 19-600 | 4-20mA analog interface |
| 19-601 | Real time clock |
| 19-602 | Alibi memory |
| 19-651 | Indicator Si30 upgrade |
| 19-652 | Indicator Si10S upgrade |
| 19-653 | Indicator Si30S upgrade |
| 19-654 | Indicator Si10SP upgrade |
| 19-655 | Indicator Si30SP upgrade |

FLOOR SCALE

SERIES B

- + Top chequered plate
- + Welded tubular structure
- + Powder coated paint
- + Accuracy III
- + 4pcs Shear Beam load cells EP-4A with OIML
- + ABS Junction box
- + Indicator Si10
- + Interface RS232
- + Factory Metrological Verification



| Order № | Model | Max load kg | Division e,g | M | Platform size (mm) |
|-------------|-------------------|-------------|--------------|---|--------------------|
| 202-1001-01 | Si10 B 600 10*10 | 600 | 200 | M | 1000x1000 |
| 202-1002-01 | Si10 B 1500 10*10 | 1500 | 500 | M | 1000x1000 |
| 202-1012-01 | Si10 B 600 12*10 | 600 | 200 | M | 1250x1000 |
| 202-1012-02 | Si10 B 1500 12*10 | 1500 | 500 | M | 1250x1000 |
| 202-1013-01 | Si10 B 3000 12*10 | 3000 | 1000 | M | 1250x1000 |
| 202-1003-01 | Si10 B 600 12*12 | 600 | 200 | M | 1250x1250 |
| 202-1003-02 | Si10 B 1500 12*12 | 1500 | 500 | M | 1250x1250 |
| 202-1003-03 | Si10 B 3000 12*12 | 3000 | 1000 | M | 1250x1250 |
| 202-1004-01 | Si10 B 600 15*12 | 600 | 200 | M | 1500x1250 |
| 202-1005-01 | Si10 B 1500 15*12 | 1500 | 500 | M | 1500x1250 |
| 202-1005-02 | Si10 B 3000 15*12 | 3000 | 1000 | M | 1500x1250 |
| 202-1006-01 | Si10 B 600 15*15 | 600 | 200 | M | 1500x1500 |
| 202-1006-02 | Si10 B 1500 15*15 | 1500 | 500 | M | 1500x1500 |
| 202-1007-01 | Si10 B 3000 15*15 | 3000 | 1000 | M | 1500x1500 |
| 202-1008-01 | Si10 B 1500 20*15 | 1500 | 500 | M | 2000x1500 |
| 202-1008-02 | Si10 B 3000 20*15 | 3000 | 1000 | M | 2000x1500 |
| 202-1009-01 | Si10 B 5000 20*15 | 5000 | 2000 | M | 2000x1500 |
| 202-1010-01 | Si10 B 3000 20*20 | 3000 | 1000 | M | 2000x2000 |
| 202-1011-01 | Si10 B 5000 20*20 | 5000 | 2000 | M | 2000x2000 |

Platform sizes may have tolerance of ±10mm

| Order № | Indicator options |
|---------|--------------------------|
| 19-015 | Li-on Battery 7.4v |
| 71-017 | RS232 Cable 2m (803) |
| 19-600 | 4-20mA analog interface |
| 19-601 | Real time clock |
| 19-602 | Alibi memory |
| 19-651 | Indicator Si30 upgrade |
| 19-652 | Indicator Si10S upgrade |
| 19-653 | Indicator Si30S upgrade |
| 19-654 | Indicator Si10SP upgrade |
| 19-655 | Indicator Si30SP upgrade |

FLOOR SCALE

SERIES BF

- + Heavy Duty structure
- + Suitable for pit installation
- + Top service access for Load cells and JB
- + Top chequered plate
- + Powder coated paint
- + Accuracy III
- + 4pcs Shear Beam load cells EP-4A with OIML
- + ABS Junction box
- + Indicator Si10
- + Interface RS232
- + Factory Metrological Verification



| Order № | Model | Max load kg | Division e.g | M | Platform size (mm) |
|-------------|--------------------|-------------|--------------|---|--------------------|
| 203-1001-01 | Si10 BF 600 10*10 | 600 | 200 | M | 1000x1000 |
| 203-1002-01 | Si10 BF 1500 10*10 | 1500 | 500 | M | 1000x1000 |
| 203-1003-01 | Si10 BF 600 12*12 | 600 | 2000 | M | 1250x1250 |
| 203-1003-02 | Si10 BF 1500 12*12 | 1500 | 500 | M | 1250x1250 |
| 203-1004-01 | Si10 BF 600 15*15 | 600 | 200 | M | 1500x1500 |
| 203-1004-02 | Si10 BF 1500 15*15 | 1500 | 500 | M | 1500x1500 |
| 203-1005-01 | Si10 BF 3000 15*15 | 3000 | 1000 | M | 1500x1500 |
| 203-1006-01 | Si10 BF 3000 20*20 | 3000 | 1000 | M | 2000x2000 |
| 203-1007-01 | Si10 BF 5000 20*20 | 5000 | 2000 | M | 2000x2000 |

Platform sizes may have tolerance of ± 10 mm

| Order № | Indicator options |
|---------|--------------------------|
| 19-015 | Li-on Battery 7.4v |
| 71-017 | RS232 Cable 2m (803) |
| 19-600 | 4-20mA analog interface |
| 19-601 | Real time clock |
| 19-602 | Alibi memory |
| 19-651 | Indicator Si30 upgrade |
| 19-652 | Indicator Si10S upgrade |
| 19-653 | Indicator Si30S upgrade |
| 19-654 | Indicator Si10SP upgrade |
| 19-655 | Indicator Si30SP upgrade |

RAMPS

SERIES B/BF

| Order № | Model | Description mm | Size W x L x H mm |
|----------|------------------|------------------------------|-------------------|
| 202-0001 | B-RP – EEP 10*10 | Ramp for platform: 1000x1000 | 1000x800x110 |
| 202-0002 | B-RP – EEP 12*12 | Ramp for platform: 1250x1250 | 1250x800x110 |
| 202-0003 | B-RP – EEP 15*15 | Ramp for platform: 1500x1500 | 1500x800x110 |
| 202-0004 | B-RP – EEP 10*10 | Ramp for platform: 1000x1000 | 1000x1000x110 |
| 202-0005 | B-RP – EEP 12*12 | Ramp for platform: 1250x1250 | 1250x1000x110 |
| 202-0006 | B-RP – EEP 15*15 | Ramp for platform: 1500x1500 | 1500x1000x110 |
| 202-0007 | B-RP – EEP 10*10 | Ramp for platform: 1000x1000 | 1000x1300x110 |
| 202-0008 | B-RP – EEP 12*12 | Ramp for platform: 1250x1250 | 1250x1300x110 |
| 202-0009 | B-RP – EEP 15*15 | Ramp for platform: 1500x1500 | 1500x1300x110 |

Platform sizes may have tolerance of ± 10 mm



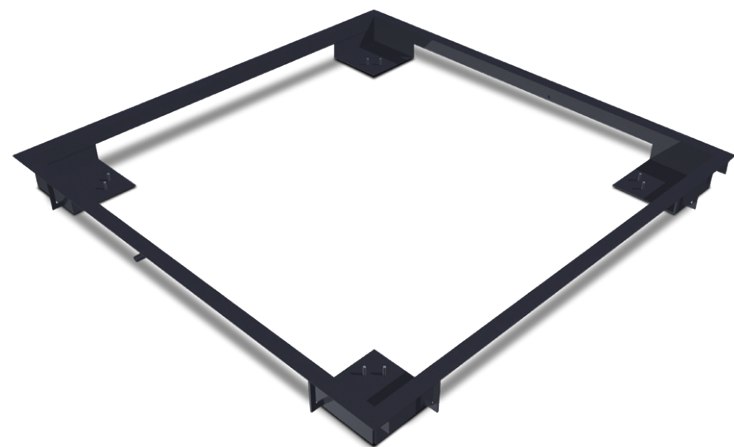
PIT FRAME

SERIES BF

| Order № | Model | Description mm | Size W x L x H mm |
|----------|----------------|------------------------------------|-------------------|
| 203-0001 | BF - EEP 10*10 | Pit frame for platform : 1000x1000 | 1020x1020x110 |
| 203-0002 | BF – EEP 12*12 | Pit frame for platform: 1250x1250 | 1270x1270x110 |
| 203-0003 | BF – EEP 15*12 | Pit frame for platform: 1500x1250 | 1520x1270x110 |
| 203-0004 | BF – EEP 15*15 | Pit frame for platform: 1500x1500 | 1520x1520x110 |
| 203-0005 | BF – EEP 20*20 | Pit frame for platform: 2000x2000 | 2020x2020x170 |

Platform sizes may have tolerance of ± 10 mm

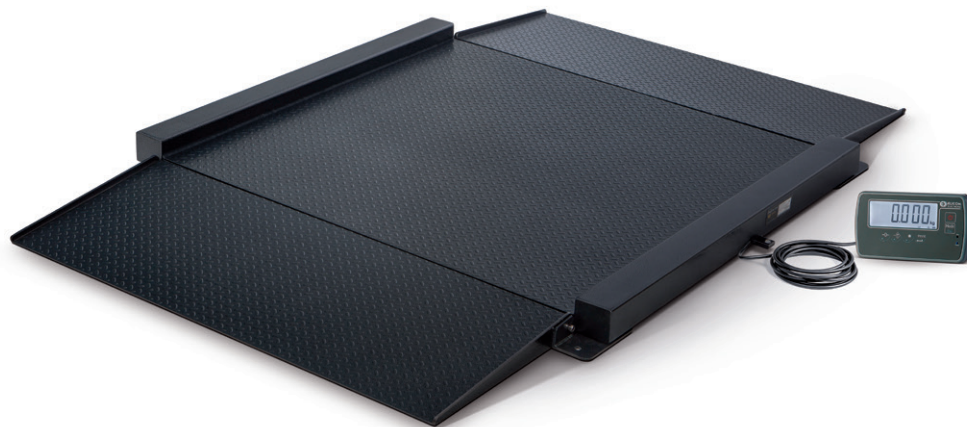
Frame for installation of scale BF into a pit



DRIVE THROUGH FLOOR SCALE

SERIES DF

- + Low profile structure
- + Height only 45mm
- + 1 ramp 500mm length
- + Top chequered plate or smooth plate under request
- + Powder coated paint
- + Accuracy class III
- + 4pcs Shear Beam load cells EP-4A with OIML
- + ABS Junction box
- + Indicator SI10
- + Interface RS232
- + Factory Metrological Verification



| Order № | Model | Max load kg | Division e,g | M | Platform size (mm) |
|-------------|---------------------|-------------|--------------|---|--------------------|
| 204-1001-01 | Si10 DF 300 7.5*7.5 | 300 | 100 | M | 750x750 |
| 204-1001-02 | Si10 DF 600 7.5*7.5 | 600 | 200 | M | 750x750 |
| 204-1002-01 | Si10 DF 600 10*10 | 600 | 200 | M | 1000x1000 |
| 204-1002-02 | Si10 DF 1500 10*10 | 1500 | 500 | M | 1000x1000 |
| 204-1003-01 | Si10 DF 600 12*12 | 600 | 200 | M | 1250x1250 |
| 204-1003-02 | Si10 DF 1500 12*12 | 1500 | 500 | M | 1250x1250 |
| 204-1004-01 | Si10 DF 600 15*15 | 600 | 200 | M | 1500x1500 |
| 204-1004-02 | Si10 DF 1500 15*15 | 1500 | 500 | M | 1500x1500 |

Platform sizes may have tolerance of ± 10 mm

| Order № | Model | Description mm | Size mm |
|----------|-----------------|-----------------------------|----------|
| 204-0001 | DF-RP 7.5*7.5 | Ramp for platform 750x750 | 750x500 |
| 204-0002 | DF-RP 10*10 | Ramp for platform 1000x1000 | 1000x500 |
| 204-0003 | DF-RP 12*12 | Ramp for platform 1250x1250 | 1250x500 |
| 204-0004 | DF-RP 15*15 | Ramp for platform 1500x1500 | 1500x500 |
| 204-0005 | STOP DF 7.5*7.5 | Go through stop 750x750 | 750 |
| 204-0006 | STOP DF 10*10 | Go through stop 1000x1000 | 1000 |
| 204-0007 | STOP DF 12*12 | Go through stop 1250x1250 | 1250 |
| 204-0008 | STOP DF 15*15 | Go through stop 1500x1500 | 1500 |

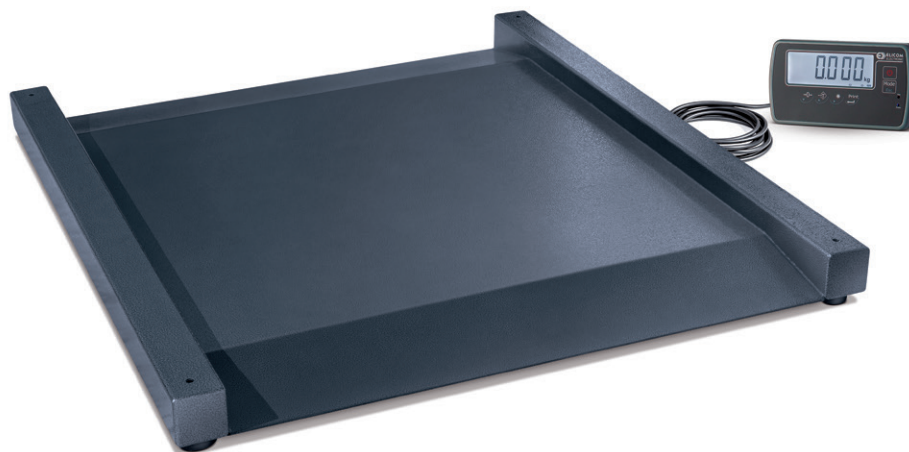
Platform sizes may have tolerance of ± 10 mm

| Order № | Indicator options |
|---------|--------------------------|
| 19-015 | Li-on Battery 7.4v |
| 71-017 | RS232 Cable 2m (803) |
| 19-600 | 4-20mA analog interface |
| 19-601 | Real time clock |
| 19-602 | Alibi memory |
| 19-651 | Indicator Si30 upgrade |
| 19-652 | Indicator Si10S upgrade |
| 19-653 | Indicator Si30S upgrade |
| 19-654 | Indicator Si10SP upgrade |
| 19-655 | Indicator Si30SP upgrade |

DRIVE THROUGH FLOOR SCALE

SERIES DL

- + Low profile structure
- + Height only 45mm
- + Integrated ramps on both sides, 200mm length
- + Top surface smooth plate 4mm
- + Powder coated paint (white color for hospitals)
- + Wheels and handle for easy transport (Option)
- + Accuracy class III
- + 4pcs Shear Beam load cells EP-4A with OIML
- + ABS Junction box
- + Indicator Si10
- + Interface RS232
- + Factory Metrological Verification



| Order № | Model | Max load kg | Division e.g | M | Platform size (mm) | Weighing surface WxD (mm) |
|-------------|--------------------|-------------|--------------|---|--------------------|---------------------------|
| 204-2001 | Si10 DL 300 8*8 | 300 | 100 | M | 960x1200x91 | 800x800 |
| 204-2001-01 | Si10 DL 600 8*8 | 600 | 200 | M | 960x1200x91 | 800x800 |
| 204-2002 | Si10 DL 300 10*10 | 300 | 100 | M | 1160x1200x91 | 1000x1000 |
| 204-2002-01 | Si10 DL 600 10*10 | 600 | 200 | M | 1160x1400x91 | 1000x1000 |
| 204-2002-02 | Si10 DL 1500 10*10 | 1500 | 500 | M | 1160x1400x91 | 1000x1000 |
| 204-2003 | Si10 DL 300 12*12 | 300 | 100 | M | 1360x1600x91 | 1200x1200 |
| 204-2003-01 | Si10 DL 600 12*12 | 600 | 200 | M | 1360x1600x91 | 1200x1200 |
| 204-2003-02 | Si10 DL 1500 12*12 | 1500 | 500 | M | 1360x1600x91 | 1200x1200 |

Platform sizes may have tolerance of ±10mm

| Order № | Indicator options |
|---------|--------------------------|
| 19-015 | Li-on Battery 7.4v |
| 71-017 | RS232 Cable 2m (803) |
| 19-600 | 4-20mA analog interface |
| 19-601 | Real time clock |
| 19-602 | Alibi memory |
| 19-651 | Indicator Si30 upgrade |
| 19-652 | Indicator Si10S upgrade |
| 19-653 | Indicator Si30S upgrade |
| 19-654 | Indicator Si10SP upgrade |
| 19-655 | Indicator Si30SP upgrade |

PALLET SCALE

SERIES PL

- + Suitable for weighing of EUR pallets 1200*800mm
- + Easy mobility with wheels and handle
- + Powder coated paint
- + Accuracy class III
- + 4pcs Shear Beam load cells EP-4A with OIML
- + ABS Junction box
- + Indicator Si10
- + Rechargeable Li-on battery
- + Interface RS232
- + Factory Metrological Verification



| Order № | Model | Max load kg | Division e.g | M | Platform size (mm) |
|-------------|--------------|-------------|--------------|---|--------------------|
| 205-1002-01 | Si10 PL 600 | 600 | 200 | M | 1224x840x87 |
| 205-1002-02 | Si10 PL 1500 | 1500 | 500 | M | 1224x840x87 |
| 205-1002-03 | Si10 PL 3000 | 3000 | 1000 | M | 1224x840x87 |

Platform sizes may have tolerance of ± 10 mm

| Order № | Indicator options |
|---------|--------------------------|
| 19-015 | Li-on Battery 7.4v |
| 71-017 | RS232 Cable 2m (803) |
| 19-600 | 4-20mA analog interface |
| 19-601 | Real time clock |
| 19-602 | Alibi memory |
| 19-651 | Indicator Si30 upgrade |
| 19-652 | Indicator Si10S upgrade |
| 19-653 | Indicator Si30S upgrade |
| 19-654 | Indicator Si10SP upgrade |
| 19-655 | Indicator Si30SP upgrade |

PALLET SCALE

SERIES PL-F

- + Suitable for weighing pallets with size: 1200*800mm and 1200*1000mm
- + Easy mobility with wheels and handle
- + Powder coated paint
- + Accuracy class III
- + 4pcs Shear Beam load cells EP-4A with OIML
- + Junction box from ABS
- + Indicator Si10
- + Rechargeable Li-on battery
- + Interface RS232
- + Factory Metrological Verification



| Order № | Model | Max load kg | Division e,g | M | Platform size (mm) |
|-------------|----------------|-------------|--------------|---|--------------------|
| 205-1012-01 | Si10 PL-F 600 | 600 | 200 | M | 1224x1000x87 |
| 205-1012-02 | Si10 PL-F 1500 | 1500 | 500 | M | 1224x1000x87 |
| 205-1013-01 | Si10 PL-F 3000 | 3000 | 1000 | M | 1224x1000x87 |

Platform sizes may have tolerance of ±10mm

| Order № | Indicator options |
|---------|--------------------------|
| 19-015 | Li-on Battery 7.4v |
| 71-017 | RS232 Cable 2m (803) |
| 19-600 | 4-20mA analog interface |
| 19-601 | Real time clock |
| 19-602 | Alibi memory |
| 19-651 | Indicator Si30 upgrade |
| 19-652 | Indicator Si10S upgrade |
| 19-653 | Indicator Si30S upgrade |
| 19-654 | Indicator Si10SP upgrade |
| 19-655 | Indicator Si30SP upgrade |

PLATFORM SCALE INOX

SERIES E-SS

- + Tubular structure AISI 304
- + Indicator pole AISI 304
- + Plate cover AISI 304
- + Single point aluminum load cell with waterproof protection
- + Stainless steel indicator Si10S
- + Li-on Battery 7.4v included
- + Factory Metrological Verification



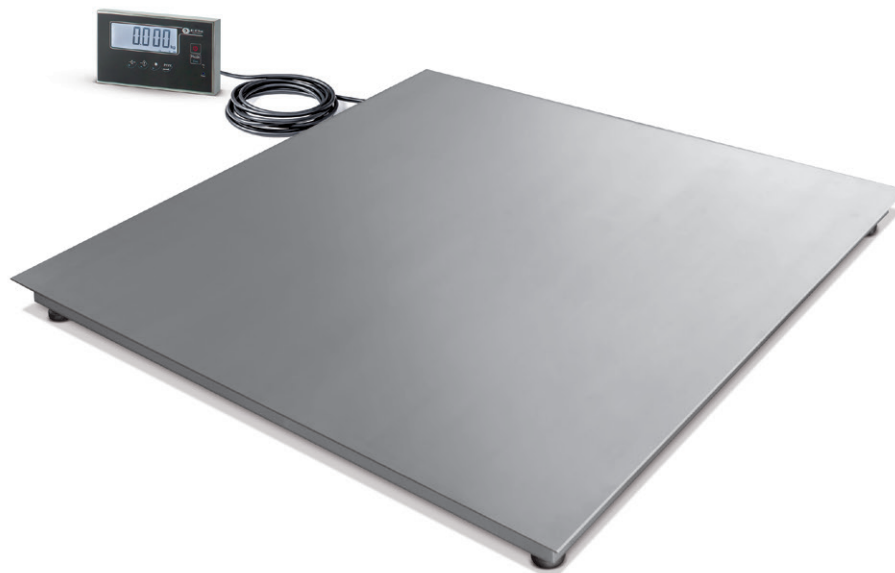
| Order № | Model | Max load kg | Division e.g | M | Platform size (mm) |
|-------------|------------------------|-------------|--------------|---|--------------------|
| 201-1141-01 | Si10S E-SS 6/15 30*30 | 15 | 2/5 | M | 300x300 |
| 201-1141 | Si10S E-SS 15/30 30*30 | 30 | 5/10 | M | 300x300 |
| 201-1142 | Si10S E-SS 30/60 30*40 | 60 | 10/20 | M | 300x400 |
| 201-1143-01 | Si10S E-SS 30/60 40*50 | 60 | 10/20 | M | 400x500 |
| 201-1143-02 | Si10S E-SS 150 40*50 | 150 | 50 | M | 400x500 |
| 201-1144-01 | Si10S E-SS 150 45*60 | 150 | 50 | M | 450x600 |
| 201-1144-02 | Si10S E-SS 300 45*60 | 300 | 100 | M | 450x600 |
| 201-1146-01 | Si10S E-SS 300 70*80 | 300 | 100 | M | 700x800 |

| Order № | Indicator options |
|---------|--------------------------|
| 19-015 | Li-on Battery 7.4v |
| 71-017 | RS232 Cable 2m (803) |
| 19-600 | 4-20mA analog interface |
| 19-601 | Real time clock |
| 19-602 | Alibi memory |
| 19-653 | Indicator Si30S upgrade |
| 19-654 | Indicator Si10SP upgrade |
| 19-655 | Indicator Si30SP upgrade |

FLOOR SCALE INOX

SERIES B-SS

- + Smooth plate 4mm AISI 304
- + Tubular structure AISI 304
- + 4pcs shear beam stainless steel load cells
- + Stainless steel junction box AISI 304
- + Stainless steel indicator Si10S
- + Li-on Battery 7.4v included
- + Factory Metrological Verification



| Order № | Model | Max load kg | Division e,g | M | Platform size (mm) |
|-------------|-----------------------|-------------|--------------|---|--------------------|
| 202-1141-01 | Si10S B-SS 300 8*8 | 300 | 100 | M | 800x800 |
| 202-1141-02 | Si10S B-SS 600 8*8 | 600 | 200 | M | 800x800 |
| 202-1142-01 | Si10S B-SS 600 10*10 | 600 | 200 | M | 1000x1000 |
| 202-1143-01 | Si10S B-SS 1500 10*10 | 1500 | 500 | M | 1000x1000 |
| 202-1144-01 | Si10S B-SS 600 12*10 | 600 | 200 | M | 1250x1000 |
| 202-1144-02 | Si10S B-SS 1500 12*10 | 1500 | 500 | M | 1250x1000 |
| 202-1145-01 | Si10S B-SS 600 12*12 | 600 | 200 | M | 1250x1250 |
| 202-1145-02 | Si10S B-SS 1500 12*12 | 1500 | 500 | M | 1250x1250 |
| 202-1146-01 | Si10S B-SS 600 15*12 | 600 | 200 | M | 1500x1250 |
| 202-1146-02 | Si10S B-SS 1500 15*12 | 1500 | 500 | M | 1500x1250 |
| 202-1146-03 | Si10S B-SS 3000 15*12 | 3000 | 1000 | M | 1500x1250 |
| 202-1148-01 | Si10S B-SS 600 15*15 | 600 | 200 | M | 1500x1500 |
| 202-1148-02 | Si10S B-SS 1500 15*15 | 1500 | 500 | M | 1500x1500 |
| 202-1149-01 | Si10S B-SS 3000 15*15 | 3000 | 1000 | M | 1500x1500 |

| Order № | Indicator options |
|---------|--------------------------|
| 19-015 | Li-on Battery 7.4v |
| 71-017 | RS232 Cable 2m (803) |
| 19-600 | 4-20mA analog interface |
| 19-601 | Real time clock |
| 19-602 | Alibi memory |
| 19-653 | Indicator Si30S upgrade |
| 19-654 | Indicator Si10SP upgrade |
| 19-655 | Indicator Si30SP upgrade |

FLOOR SCALE INOX

SERIES B-SS-O

- + Gas spring opening of top plate
- + Smooth plate 6mm AISI 304
- + Tubular structure AISI 304
- + 4pcs shear beam stainless steel load cells
- + Stainless steel junction box AISI 304
- + Stainless steel indicator Si10S
- + Li-on Battery 7.4v included
- + Factory Metrological Verification



| Order № | Model | Max load kg | Division e.g | M | Platform size (mm) |
|--------------|-------------------------|-------------|--------------|---|--------------------|
| 203-1162-01 | Si10S B-SS-O 600 10*10 | 600 | 200 | M | 1000x1000 |
| 203-11662-02 | Si10S B-SS-O 1500 10*10 | 1500 | 500 | M | 1000x1000 |
| 203-1163-01 | Si10S B-SS-O 600 12*12 | 600 | 200 | M | 1250x1250 |
| 203-1163-02 | Si10S B-SS-O 1500 12*12 | 1500 | 500 | M | 1250x1250 |
| 203-1164-01 | Si10S B-SS-O 600 15*12 | 600 | 200 | M | 1500x1250 |
| 203-1164-02 | Si10S B-SS-O 1500 15*12 | 1500 | 500 | M | 1500x1250 |
| 203-1164-03 | Si10S B-SS-O 3000 15*12 | 3000 | 1000 | M | 1500x1250 |
| 203-1165-01 | Si10S B-SS-O 600 15*15 | 600 | 200 | M | 1500x1500 |
| 203-1165-02 | Si10S B-SS-O 1500 15*15 | 1500 | 500 | M | 1500x1500 |
| 203-1166-01 | Si10S B-SS-O 3000 15*15 | 3000 | 1000 | M | 1500x1500 |

| Order № | Indicator options |
|---------|--------------------------|
| 19-015 | Li-on Battery 7.4v |
| 71-017 | RS232 Cable 2m (803) |
| 19-600 | 4-20mA analog interface |
| 19-601 | Real time clock |
| 19-602 | Alibi memory |
| 19-653 | Indicator Si30S upgrade |
| 19-654 | Indicator Si10SP upgrade |
| 19-655 | Indicator Si30SP upgrade |

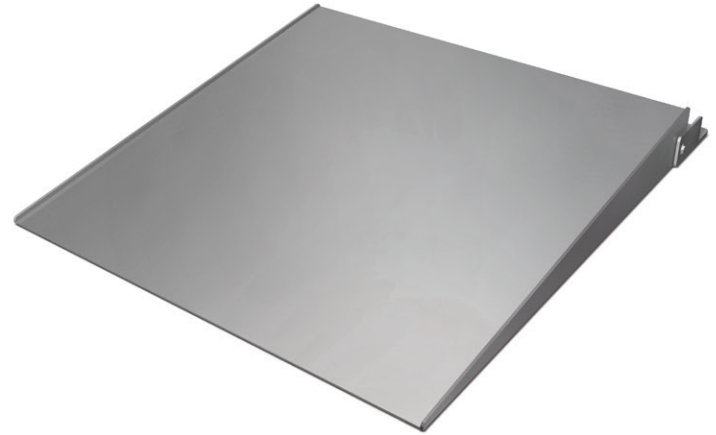
RAMPS

SERIES B-SS

- + Ramp
- + Made of AISI 304 steel

| Order № | Model | Description mm | Size W x L x H mm |
|----------|------------------|------------------------------|-------------------|
| 202-0041 | B-RP – EEP 10*10 | Ramp for platform: 1000x1000 | 1000x800x110 |
| 202-0042 | B-RP – EEP 12*12 | Ramp for platform: 1250x1250 | 1250x800x110 |
| 202-0043 | B-RP – EEP 15*15 | Ramp for platform: 1500x1500 | 1500x800x110 |
| 202-0044 | B-RP – EEP 10*10 | Ramp for platform: 1000x1000 | 1000x1000x110 |
| 202-0045 | B-RP – EEP 12*12 | Ramp for platform: 1250x1250 | 1250x1000x110 |
| 202-0046 | B-RP – EEP 15*15 | Ramp for platform: 1500x1500 | 1500x1000x110 |
| 202-0047 | B-RP – EEP 10*10 | Ramp for platform: 1000x1000 | 1000x1300x110 |
| 202-0048 | B-RP – EEP 12*12 | Ramp for platform: 1250x1250 | 1250x1300x110 |
| 202-0049 | B-RP – EEP 15*15 | Ramp for platform: 1500x1500 | 1500x1300x110 |

Platform sizes may have tolerance of ± 10 mm



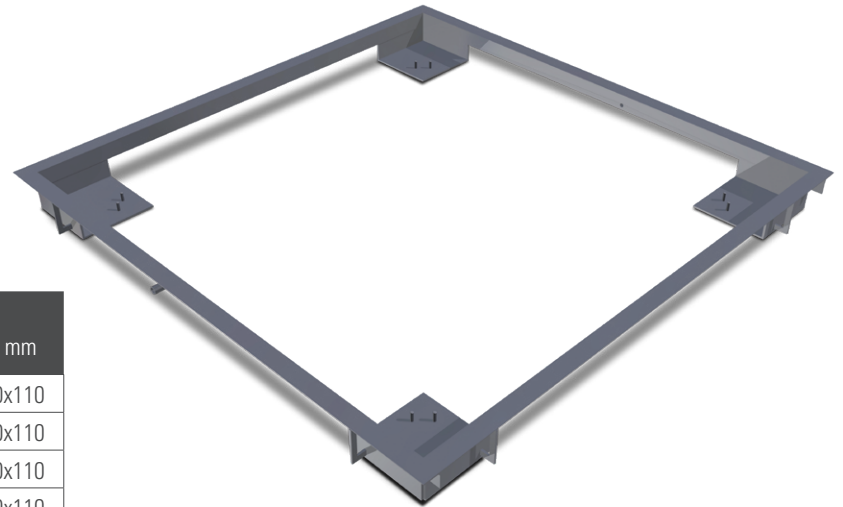
PIT FRAME

SERIES B-SS-O

- + Pit frame
- + Made of AISI 304 steel

| Order № | Model | Description mm | Size W x L x H mm |
|----------|-----------------|------------------------------------|-------------------|
| 203-0041 | BF-SS EEP 10*10 | Pit frame for platform : 1000x1000 | 1020x1020x110 |
| 203-0042 | BF-SS EEP 12*12 | Pit frame for platform: 1250x1250 | 1270x1270x110 |
| 203-0043 | BF-SS EEP 15*12 | Pit frame for platform: 1500x1250 | 1520x1270x110 |
| 203-0044 | BF-SS EEP 15*15 | Pit frame for platform: 1500x1500 | 1520x1520x110 |

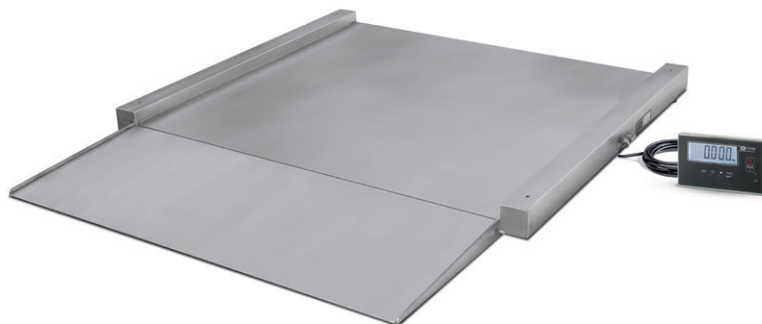
Platform sizes may have tolerance of ± 10 mm



LOW PROFILE SCALE INOX

SERIES DF-SS

- + Low profile structure
- + Single ramp
- + Height 50mm
- + Tubular frame from AISI 304
- + 4pcs shear beam stainless steel load cells
- + Junction box from AISI 304
- + Stainless steel indicator Si10S
- + Li-on Battery 7.4v included
- + Approved type
- + Factory Metrological Verification



| Order № | Model | Max load kg | Division e.g | M | Platform size (mm) |
|-------------|------------------------|-------------|--------------|---|--------------------|
| 204-1041-01 | Si10S DF-SS 300 8*8 | 300 | 100 | M | 800x800 |
| 204-1041-02 | Si10S DF-SS 600 8*8 | 600 | 200 | M | 800x800 |
| 204-1042-01 | Si10S DF-SS 600 10*10 | 600 | 200 | M | 1000x1000 |
| 204-1042-02 | Si10S DF-SS 1500 10*10 | 1500 | 500 | M | 1000x1000 |
| 204-1043-01 | Si10S DF-SS 600 12*10 | 600 | 200 | M | 1250x1000 |
| 204-1043-02 | Si10S DF-SS 1500 12*10 | 1500 | 500 | M | 1250x1000 |
| 204-1044-01 | Si10S DF-SS 600 12*12 | 600 | 200 | M | 1250x1250 |
| 204-1044-02 | Si10S DF-SS 1500 12*12 | 1500 | 500 | M | 1250x1250 |
| 204-1045-01 | Si10S DF-SS 600 15*15 | 600 | 200 | M | 1500x1500 |
| 204-1045-02 | Si10S DF-SS 1500 15*15 | 1500 | 500 | M | 1500x1500 |

Platform sizes may have tolerance of ± 10 mm

| Order № | Model | Description mm | Size mm |
|----------|--------------------|-----------------------------|----------|
| 204-0041 | DF-SS-RP 8*8 | Ramp for platform 800x800 | 800x500 |
| 204-0042 | DF-SS-RP 10*10 | Ramp for platform 1000x1000 | 1000x500 |
| 204-0043 | DF-SS-RP 12*12 | Ramp for platform 1250x1250 | 1250x500 |
| 204-0044 | DF-SS-RP 15*15 | Ramp for platform 1500x1500 | 1500x500 |
| 204-0045 | STOP DF-SS-O 8*8 | Go through stop 800x800 | 800 |
| 204-0046 | STOP DF-SS-O 10*10 | Go through stop 1000x1000 | 1000 |
| 204-0047 | STOP DF-SS-O 12*12 | Go through stop 1250x1250 | 1250 |
| 204-0048 | STOP DF-SS-O 15*15 | Go through stop 1500x1500 | 1500 |

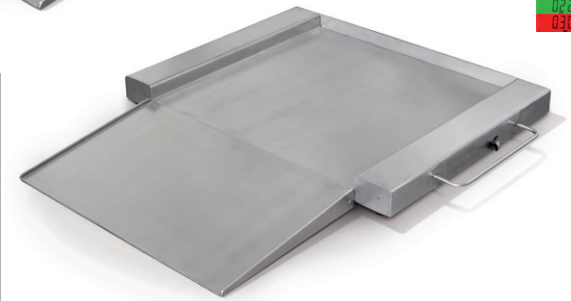
Platform sizes may have tolerance of ± 10 mm

| Order № | Indicator options |
|---------|--------------------------|
| 19-015 | Li-on Battery 7.4v |
| 71-017 | RS232 Cable 2m (803) |
| 19-600 | 4-20mA analog interface |
| 19-601 | Real time clock |
| 19-602 | Alibi memory |
| 19-653 | Indicator Si30S upgrade |
| 19-654 | Indicator Si10SP upgrade |
| 19-655 | Indicator Si30SP upgrade |

LOW PROFILE SCALE INOX

SERIES DF-SS-OPEN

- + Low profile structure
- + Single ramp
- + Height 55mm
- + Opening of the top plate with gas springs for easy cleaning
- + Tubular frame from AISI 304
- + 4pcs shear beam load cells from stainless steel
- + Junction box from AISI 304
- + Stainless steel indicator Si10S
- + Approved type
- + Factory Metrological Verification



| Order № | Model | Max load kg | Division e.g | M | Platform size (mm) |
|-------------|------------------------------|-------------|--------------|---|--------------------|
| 204-1061-01 | Si10S DF-SS-O 300 8*8 | 300 | 100 | M | 800x800 |
| 204-1061-02 | Si10S DF-SS-O 600 8*8 | 600 | 200 | M | 800x800 |
| 204-1062-01 | Si10S DF-SS-O 600 10*10 | 600 | 200 | M | 1000x1000 |
| 204-1062-02 | Si10S DF-SS-O 1500 10*10 | 1500 | 500 | M | 1000x1000 |
| 204-1063-01 | Si10S DF-SS-O 600 12*10 | 600 | 200 | M | 1250x1000 |
| 204-1063-02 | Si10S DF-SS-O 600/1500 12*10 | 1500 | 500 | M | 1250x1000 |
| 204-1064-01 | Si10S DF-SS-O 600 12*12 | 600 | 200 | M | 1250x1250 |
| 204-1064-02 | Si10S DF-SS-O 1500 12*12 | 1500 | 500 | M | 1250x1250 |
| 204-1065-01 | Si10S DF-SS-O 600 15*12 | 500 | 200 | M | 1500x1250 |
| 204-1065-02 | Si10S DF-SS-O 1500 15*12 | 1500 | 500 | M | 1500x1250 |
| 204-1066-01 | Si10S DF-SS-O 600 15*15 | 600 | 200 | M | 1500x1500 |
| 204-1066-02 | Si10S DF-SS-O 1500 15*15 | 1500 | 500 | M | 1500x1500 |

Platform sizes may have tolerance of ±10mm

| Order № | Model | Description mm | Size mm |
|----------|--------------------|-----------------------------|----------|
| 204-0061 | DF-SS-O-RP 8*8 | Ramp for platform 800x800 | 800x500 |
| 204-0062 | DF-SS-O-RP 10*10 | Ramp for platform 1000x1000 | 1000x500 |
| 204-0063 | DF-SS-O-RP 12*12 | Ramp for platform 1250x1250 | 1250x500 |
| 204-0064 | DF-SS-O-RP 15*15 | Ramp for platform 1500x1500 | 1500x500 |
| 204-0065 | STOP DF-SS-O 8*8 | Go through stop 800x800 | 800 |
| 204-0066 | STOP DF-SS-O 10*10 | Go through stop 1000x1000 | 1000 |
| 204-0067 | STOP DF-SS-O 12*12 | Go through stop 1250x1250 | 1250 |
| 204-0068 | STOP DF-SS-O 15*15 | Go through stop 1500x1500 | 1500 |

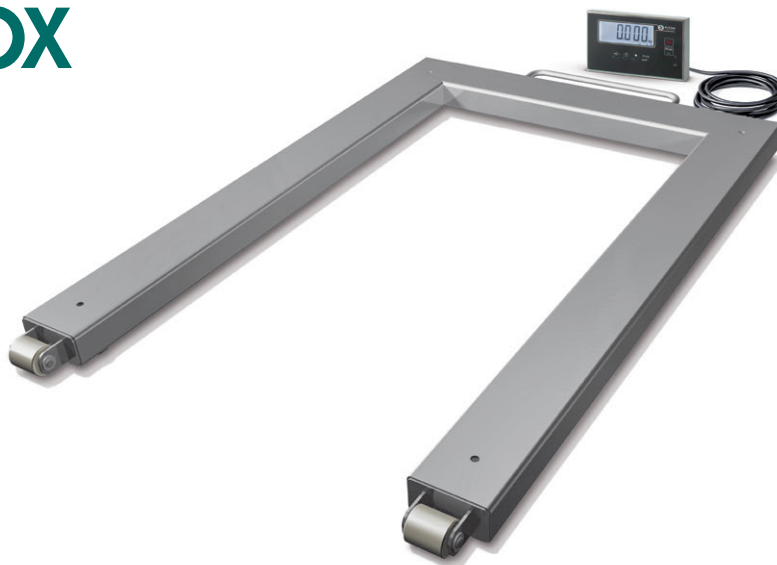
Platform sizes may have tolerance of ±10mm

| Order № | Indicator options |
|---------|--------------------------|
| 19-015 | Li-on Battery 7.4v |
| 71-017 | RS232 Cable 2m (803) |
| 19-600 | 4-20mA analog interface |
| 19-601 | Real time clock |
| 19-602 | Alibi memory |
| 19-653 | Indicator Si30S upgrade |
| 19-654 | Indicator Si10SP upgrade |
| 19-655 | Indicator Si30SP upgrade |

PALLET SCALE INOX

SERIES PL-SS

- + Suitable for weighing of EUR pallets 1200*800mm
- + Easy mobility with wheels and handle
- + Stainless steel structure
- + Accuracy class III
- + 4pcs shear beam load cells from stainless steel
- + Junction box from stainless steel
- + Interface RS232
- + Indicator Si10S
- + Li-on Battery 7.4v included



| Order № | Model | Max load kg | Division e,g | M | Platform size (mm) |
|-------------|------------------|-------------|--------------|---|--------------------|
| 205-1042-01 | Si10S PL-SS 600 | 600 | 200 | M | 1224x840x87 |
| 205-1042-02 | Si10S PL-SS 1500 | 1500 | 500 | M | 1224x840x87 |
| 205-1043-01 | Si10S PL-SS 3000 | 3000 | 1000 | M | 1224x840x87 |

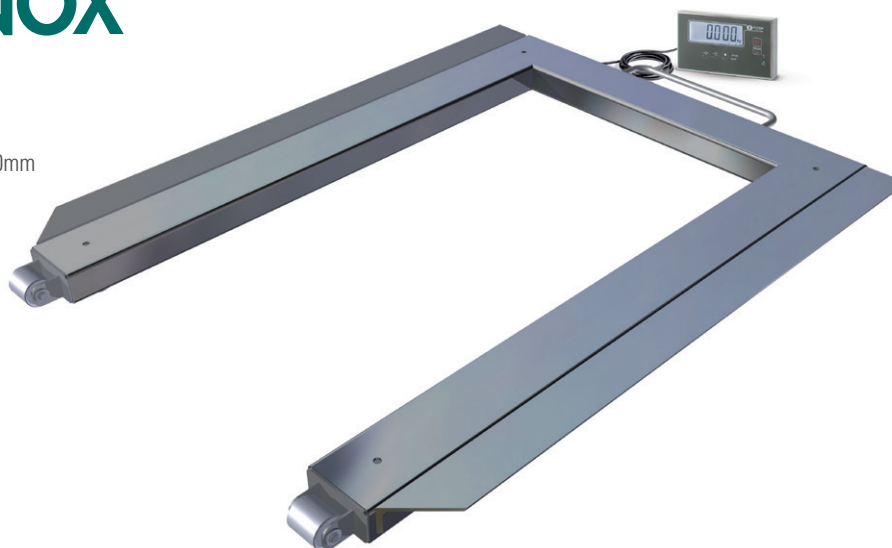
Platform sizes may have tolerance of ±10mm

| Order № | Indicator options |
|---------|--------------------------|
| 19-015 | Li-on Battery 7.4v |
| 71-017 | RS232 Cable 2m (803) |
| 19-600 | 4-20mA analog interface |
| 19-601 | Real time clock |
| 19-602 | Alibi memory |
| 19-653 | Indicator Si30S upgrade |
| 19-654 | Indicator Si10SP upgrade |
| 19-655 | Indicator Si30SP upgrade |

PALLET SCALE INOX

SERIES PL-F-SS

- + Suitable weighing of EUR pallets 1200*800mm and 1200*1000mm
- + Easy mobility with wheels and handle
- + Stainless steel structure
- + Accuracy class III
- + 4pcs shear beam load cells from stainless steel
- + Junction box from stainless steel
- + Rechargeable Li-on battery
- + Interface RS232
- + Indicator Si10S



| Order № | Model | Max load kg | Division e.g | M | Platform size (mm) |
|-------------|--------------------|-------------|--------------|---|--------------------|
| 205-1052-01 | Si10S PL-F-SS 600 | 600 | 200 | M | 1224x1000x87 |
| 205-1052-02 | Si10S PL-F-SS 1500 | 1500 | 500 | M | 1224x1000x87 |
| 205-1053-01 | Si10S PL-F-SS 3000 | 3000 | 1000 | M | 1224x1000x87 |

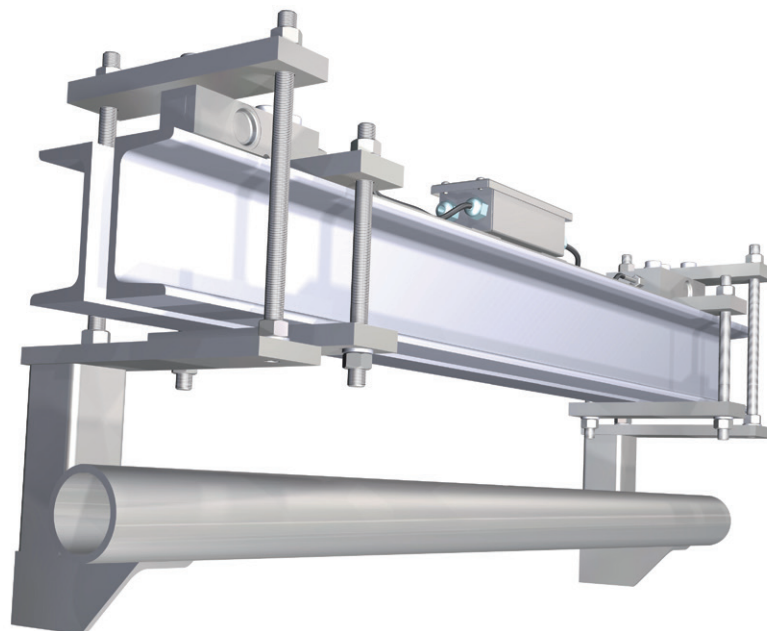
Platform sizes may have tolerance of ±10mm

| Order № | Indicator options |
|---------|--------------------------|
| 19-015 | Li-on Battery 7.4v |
| 71-017 | RS232 Cable 2m (803) |
| 19-600 | 4-20mA analog interface |
| 19-601 | Real time clock |
| 19-602 | Alibi memory |
| 19-653 | Indicator Si30S upgrade |
| 19-654 | Indicator Si10SP upgrade |
| 19-655 | Indicator Si30SP upgrade |

OVERHEAD RAIL SCALE

SERIES H-SS

- + Custom solutions available under request
- + Available for all common tubular types
- + Individual lengths from 600 to 1000mm
- + Stainless steel frame
- + 2pcs shear beam stainless steel load cells
- + Junction box from AISI 304
- + Stainless steel indicator Si10S
- + Li-on Battery 7.4v included
- + Legal for trade



| Order № | Model | Max load kg | Division e.g | M | Length (mm) |
|----------|--------------------|-------------|--------------|---|-------------|
| 207-0003 | Si10S H-SS300 0.6 | 300 | 100 | M | 600 |
| 207-0004 | Si10S H-SS 600 0.6 | 600 | 200 | M | 600 |
| 207-0005 | Si10S H-SS 300 0.8 | 300 | 100 | M | 800 |
| 207-0006 | Si10S H-SS 600 0.8 | 600 | 200 | M | 800 |
| 207-0007 | Si10S H-SS 300 1 | 300 | 100 | M | 1000 |
| 207-0008 | Si10S H-SS 600 1 | 600 | 200 | M | 1000 |

| Order № | Indicator options |
|---------|--------------------------|
| 19-015 | Li-on Battery 7.4v |
| 71-017 | RS232 Cable 2m (803) |
| 19-600 | 4-20mA analog interface |
| 19-601 | Real time clock |
| 19-602 | Alibi memory |
| 19-653 | Indicator Si30S upgrade |
| 19-654 | Indicator Si10SP upgrade |
| 19-655 | Indicator Si30SP upgrade |

Subject to technical modifications due to further development.

WALL SCALE

SERIES W-SS

- + Wall hanging scale for food industry
- + Made of stainless steel SUS304
- + Foldable table as standard
- + Optional hanging pole (Type "WC")
- + Accuracy class III
- + Stainless steel load cell IP68
- + Indicator Si10S with IP65
- + Interface RS232
- + Metrological verification

| Order № | Model | Max load kg | Division e,g | Platform size (mm) |
|----------|-----------------|-------------|--------------|--------------------|
| 208-0001 | Si10S W-SS 150 | 150 | 50 | 500x500 |
| 208-0002 | Si10S WC-SS 150 | 150 | 50 | 500x500 |
| 208-0003 | Si10S W-SS 300 | 300 | 100 | 500x500 |
| 208-0004 | Si10S WC-SS 300 | 300 | 100 | 500x500 |

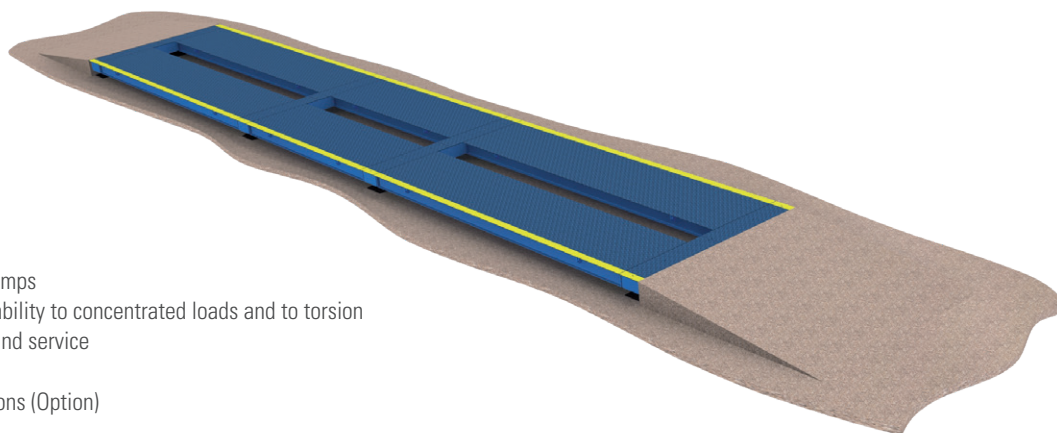
| Order № | Indicator options |
|---------|--------------------------|
| 19-015 | Li-on Battery 7.4v |
| 71-017 | RS232 Cable 2m (803) |
| 19-600 | 4-20mA analog interface |
| 19-601 | Real time clock |
| 19-602 | Alibi memory |
| 19-653 | Indicator Si30S upgrade |
| 19-654 | Indicator Si10SP upgrade |
| 19-655 | Indicator Si30SP upgrade |



TRUCK SCALE

SERIES ELIAUTO ECO

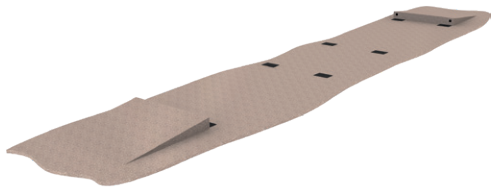
- + New innovative modular structure
- + CAD designed and tested in real conditions
- + Low structure height of 320mm, saving cost and length of ramps
- + 8mm checker plate for top surface, guarantees extreme durability to concentrated loads and to torsion
- + Service openings on top of the scale for easy maintenance and service
- + Steel ramps (Option)
- + Flat surface installation without need of expensive foundations (Option)
- + Quick and easy relocation for temporary sites
- + Painted with epoxy paint by airless technology
- + Lightning indicator protection
- + Double shear-beam IP68 load cells, spherical self-centering oscillating joints for compensating the thermal expansions, guaranteeing safe weighing and accuracy
- + Metrological verification
- + Produced by certified European steel S235JR
- + Produced under integrated quality assurance system ISO9001:2015
- + Designed for easy export and transportation by truck or sea container
- + Made in Bulgaria



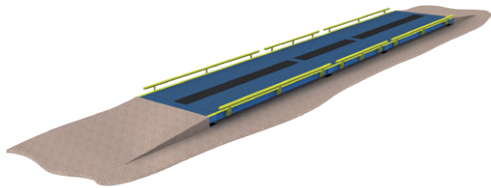
| Model | Platform size | Max Capacity | Division e | Number of load cells |
|-------------------------|---------------|--------------|------------|----------------------|
| Type:Si-10 Model:A6-30 | 6 x 3 m | 30 t | 10 kg | 4 |
| Type:Si-10 Model:A8-30 | 8 x 3 m | 30 t | 10 kg | 6 |
| Type:Si-10 Model:A10-60 | 10 x 3 m | 60 t | 20 kg | 6 |
| Type:Si-10 Model:A12-60 | 12 x 3 m | 60 t | 20 kg | 6 |
| Type:Si-10 Model:A14-60 | 14 x 3 m | 60 t | 20 kg | 8 |
| Type:Si-10 Model:A16-60 | 16 x 3 m | 60 t | 20 kg | 8 |
| Type:Si-10 Model:A18-60 | 18 x 3 m | 60 t | 20 kg | 8 |
| Type:Si-10 Model:A18-80 | 18 x 3 m | 80 t | 50 kg | 8 |
| Type:Si-10 Model:A20-80 | 20 x 3 m | 80 t | 50 kg | 10 |
| Type:Si-10 Model:A22-80 | 22 x 3 m | 80 t | 50 kg | 10 |
| Type:Si-10 Model:A24-80 | 24 x 3 m | 80 t | 50 kg | 10 |



ABOVE GROUND INSTALLATION WITH CONCRETE RAMPS



Concrete foundation



Installation

MOBILE VERSION WITH METAL RAMPS INSTALLED ON FLAT CONCRETE TERRAIN

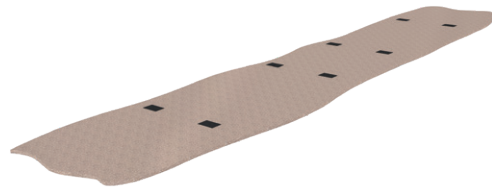
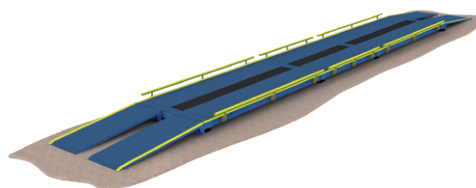
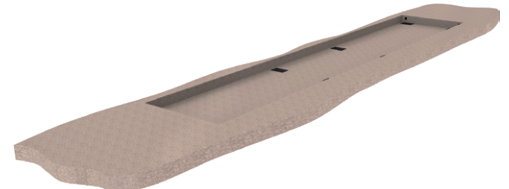


Plate installation

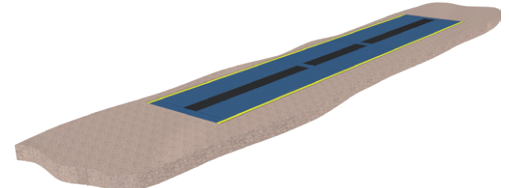


Installation

PIT INSTALLATION

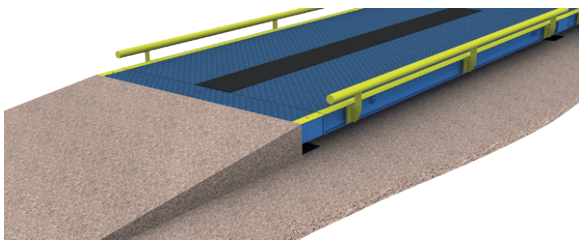


Concrete pit foundation

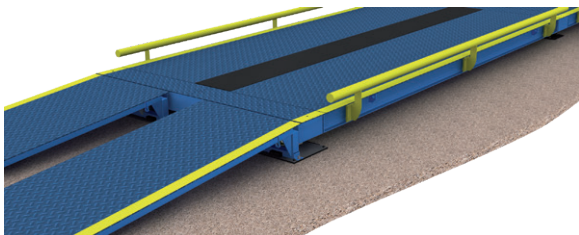


Installation

WEIGHBRIDGE OPTIONS



- Side Rails
- Middle covers



- Steel ramps
- installation on flat surface

INDICATOR

Si-10

DESCRIPTION:

- + OIML approved
- + EU type approval: 10,000e, 0.3 μ V/d
- + Protection Class: IP30
- + Housing: ABS Plastic
- + Display: Large segment display with 32mm digit height
- + Backlight: Multicolor backlight
- + Keyboard: 6 keys Capacitive touch
- + Mounting type: Column, Wall, Desktop with reversible display orientation
- + Power supply: 100-240 VAC internal switching supply
- + Interface: 2 x RS232 interfaces in single port standard
- + Battery: Li-ion battery with external access - option



APPLICATION:

- + General purpose scale indicator
- + Bench, floor and truck scales
- + Weighing
- + Piece counting
- + Checkweighing with backlight color change and acoustic signal
- + Animal weighing
- + Hold
- + Auto Hold
- + Tare
- + Auto Tare
- + Receipt printing
- + Totalization



| Order № | Indicator options |
|---------|-------------------------|
| 19-015 | Li-on Battery 7.4v |
| 71-017 | RS232 Cable 2m (803) |
| 19-600 | 4-20mA analog interface |
| 19-601 | Real time clock |

INDICATOR

Si-30

DESCRIPTION:

- + OIML approved
- + EU type approval: 10,000e, 0.3 µV/d
- + Protection Class: IP30
- + Housing: ABS Plastic
- + Display: Graphic display with backlight
- + Keyboard: 16 keys Capacitive touch
- + Mounting type: Column, Wall, Desktop with reversible display orientation
- + Power supply: 100-240 VAC internal switching supply
- + Interface: 2 x RS232 interfaces in single port standard
- + Battery: Li-ion battery with external access - option

APPLICATION:

- + General purpose scale indicator
- + Bench, floor and truck scales
- + Price computing option
- + Weighing
- + Piece counting
- + Checkweighing with backlight color change and acoustic signal
- + Animal weighing
- + Hold
- + Auto Hold
- + Manual Tare
- + Pre-set Tare
- + Tare
- + Auto Tare
- + Receipt printing
- + Memory for 2000 PLU for weighing and counting
- + Labeling with product name, expiration, ingredients
- + Totalization



| Order № | Indicator options |
|---------|-------------------------|
| 19-015 | Li-ion Battery 7.4v |
| 71-017 | RS232 Cable 2m (803) |
| 19-600 | 4-20mA analog interface |
| 19-601 | Real time clock |
| 19-602 | Alibi Memory |

INDICATOR

Si-10S

DESCRIPTION:

- + OIML approved
- + EU type approval: 10,000e, 0.3 μ V/d
- + Protection Class: IP65
- + Housing: Stainless Steel
- + Display: Large segment display with 32mm digit height
- + Backlight: Multicolor backlight
- + Keyboard: 6 keys Capacitive touch
- + Mounting type: Column, Wall, Desktop
- + Power supply: 100-240 VAC internal switching supply Interface: 2 x RS232 interfaces
- + Battery: Li-ion battery - option

APPLICATION:

- + Scale indicator for harsh, wet and hygienic areas
- + Bench, floor and truck scales
- + Weighing
- + Piece counting
- + Checkweighing with backlight color change and acoustic signal
- + Animal weighing
- + Hold
- + Auto Hold
- + Tare
- + Auto Tare
- + Receipt printing
- + Totalization



| Order № | Indicator options |
|---------|-------------------------|
| 19-015 | Li-on Battery 7.4v |
| 71-017 | RS232 Cable 2m (803) |
| 19-600 | 4-20mA analog interface |
| 19-601 | Real time clock |

INDICATOR

Si-30S

DESCRIPTION:

- + OIML approved
- + EU type approval: 10,000e, 0.3 μ V/d
- + Protection Class: IP65
- + Housing: Stainless Steel
- + Display: Graphic display with backlight
- + Keyboard: 16 keys Capacitive touch
- + Mounting type: Column, Wall, Desktop
- + Power supply: 100-240 VAC internal switching supply
- + Interface: 2 x RS232 interfaces
- + Battery: Li-ion battery - option

APPLICATION:

- + Scale indicator for harsh, wet and hygienic areas
- + Bench, floor and truck scales
- + Price computing option
- + Weighing
- + Piece counting
- + Checkweighing with visual acoustic signal
- + Animal weighing
- + Hold
- + Auto Hold
- + Manual Tare
- + Pre-set Tare
- + Tare
- + Auto Tare
- + Receipt printing
- + Memory for 2000 PLU for weighing and counting
- + Labeling with product name, expiration, ingredients
- + Totalization
- + Software Label Editor for label design



| Order № | Indicator options |
|---------|-------------------------|
| 19-015 | Li-on Battery 7.4v |
| 71-017 | RS232 Cable 2m (803) |
| 19-600 | 4-20mA analog interface |
| 19-601 | Real time clock |
| 19-602 | Alibi memory |

INDICATOR

Si-1OSP

DESCRIPTION:

- + OIML approved
- + EU type approval: 10,000e, 0.3 μ V/d
- + Protection Class: IP30
- + Housing: Stainless Steel
- + Display: Large segment display with 32mm digit height
- + Backlight: Multicolor backlight
- + Keyboard: 6 keys Capacitive touch
- + Printer: Panel receipt printer 58mm, Easy Load
- + Mounting type: Column, Wall, Desktop
- + Power supply: 100-240 VAC internal switching supply
- + Interface: 1 x RS232 interface
- + Battery: Li-ion battery - option



APPLICATION:

- + Built-in receipt printer
- + Bench, floor and truck scales
- + Weighing
- + Piece counting
- + Checkweighing with backlight color change and acoustic signal
- + Animal weighing
- + Hold
- + Auto Hold
- + Tare
- + Auto Tare
- + Receipt printing
- + Totalization
- + Real time clock for Date and Time



| Order № | Indicator options |
|---------|----------------------|
| 71-017 | RS232 Cable 2m (803) |

INDICATOR

Si-30SP

DESCRIPTION:

- + OIML approved
- + EU type approval: 10,000e, 0.3 μ V/d
- + Protection Class: IP30
- + Housing: Stainless Steel
- + Display: Graphic display with backlight
- + Keyboard: 16 keys Capacitive touch
- + Printer: Panel receipt printer 58mm, Easy Load
- + Mounting type: Column, Wall, Desktop
- + Power supply: 100-240 VAC internal switching supply
- + Interface: 1 x RS232 interface
- + Battery: Li-ion battery

APPLICATION:

- + Built-in receipt printer
- + Bench, floor and truck scales
- + Price computing option
- + Weighing
- + Piece counting
- + Checkweighing with visual acoustic signal
- + Animal weighing
- + Hold
- + Auto Hold
- + Manual Tare
- + Pre-set Tare
- + Tare
- + Auto Tare
- + Receipt printing
- + Memory for 2000 PLU for weighing and counting
- + Labeling with product name, expiration, ingredients (receipts only)
- + Totalization
- + Software Label Editor for label design
- + Real time clock for Date and Time



| Order № | Indicator options |
|---------|-------------------------|
| 71-017 | RS232 Cable 2m (803) |
| 19-600 | 4-20mA analog interface |
| 19-602 | Alibi Memory |